



# TECHNICAL SHEET

**BELT TYPE: U 10/AG**

**CODE NUMBER: 5XA6**

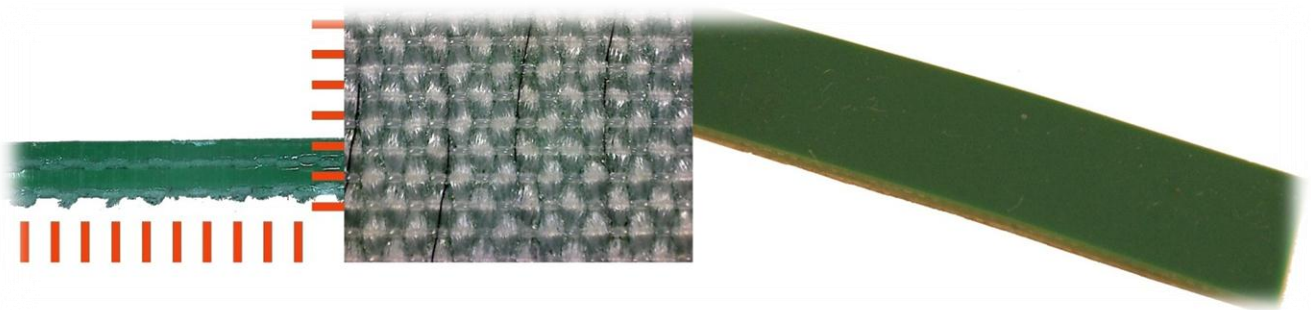
## MOST POPULAR APPLICATIONS

Horizontal or slight slope conveying of single loads, bundles, tobacco, bulk products, wood, veneers.

## GENERAL CHARACTERISTICS

2-ply polyester belt with rigid weft. PVC apple green top cover.

Excellent resistance to abrasion and good resistance to mineral oils and detergents. Raw sliding side



## **CARRIING COVER**

THICKNESS (mm)	0.5mm
THICKNESS (inches)	0.02in
HARDNESS (° SHORE A)	74° Shore A
COLOUR	APPLE GREEN
SURFACE	SMOOTH
BOTTOM COVER	RAW FABRIC
POSSIBLE STRUCTURES	A N V Z

## GENERAL CHARACTERISTICS

---

No OF PLIES	2
WEFT	R
MAX. PRODUCTION WIDTH (mm)	3000mm
MAX PRODUCTION WIDTH (inches)	118.12in
ANTISTATICITY	YES
TOTAL THICKNESS (mm)	2mm
TOTAL THICKNESS (inches)	0.079in
MASS(KG/M2)	2.29Kg/m2
MASS(LB/FT2)	0.47lb/ft2
PULL PER 1% (daN/cm)	8daN/cm
PULL PER 1% (lbf/in)	45.70lbf/in
WORKING TEMPERATURE (C °)	-10+80 C °
WORKING TEMPERATURE( F °)	14 +176F °
FDA APPROVAL	NO
SLIDER BED	YES
METAL THROUGHES	No
HORIZONTAL ROLLERS	Yes
THROUGH IDLERS	NO / To be checked
SLIDING	NO

## MINIMAL ROLLER DIAMETRES (mm)

---

FLEXION	30mm
COUNTER FLEXION	50mm

## MINIMAL ROLLER DIAMETRES (inches)

---

FLEXION	1.18in
COUNTER FLEXION	1.97in

## JOINING METHOD

---

HOT EXECUTIONS	FS
FASTENERS	K3 -G1 INOX B2

## FRICTION COEFFICIENT

---

Stainless Steel, BA (Brilliant surface)	0.20
Stainless Steel, 2B (Half-brilliant surface)	0.18
Stainless Steel, 2D (Hot-Laminated Surface)	0.26
Rolled Steel Plate	0.20
Plastic Sheet (brilliant surface)	0.20