



TECHNICAL SHEET

BELT TYPE: R14

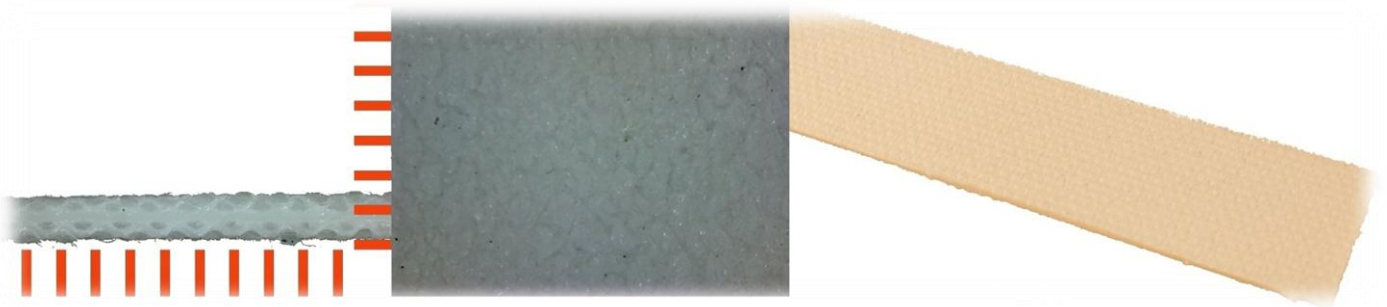
CODE NUMBER: 5 E24

MOST POPULAR APPLICATIONS

- Bakery industry.

GENERAL CHARACTERISTICS

2-ply polyester belt with rigid weft. 85° Shore A white PU between the plies. Raw top cover and white PU skimming on bottom cover.



CARRYING COVER

THICKNESS (mm)	-
THICKNESS (inches)	-
HARDNESS (° SHORE A)	85° Shore A
COLOUR	RAW
SURFACE	
BOTTOM COVER	PU SKIMMED
POSSIBLE STRUCTURES	-

GENERAL CHARACTERISTICS

No OF PLYS	2
WEFT	RIGID
MAX. PRODUCTION WIDTH (mm)	2150mm
MAX PRODUCTION WIDTH (inches)	84.65in
ANTISTATICITY	NO
TOTAL THICKNESS (mm)	1.39mm
TOTAL THICKNESS (inches)	0.055in
MASS(KG/M2)	1.5Kg/m2
MASS(LB/FT2)	0.31lb/ft2
PULL PER 1% (daN/cm)	8daN/cm
PULL PER 1% (lbf/in)	45.70lbf/in
WORKING TEMPERATURE (C °)	-30+80 C °
WORKING TEMPERATURE(F °)	-22 +176F °
FDA APPROVAL	YES
SLIDER BED	YES
METAL THROUGHES	NO
HORIZONTAL ROLLERS	YES
THROUGH IDLERS	NO / NO
SLIDING	NO

MINIMAL ROLLER DIAMETRES (mm)

FLEXION	30mm
COUNTER FLEXION	30mm

MINIMAL ROLLER DIAMETRES (inches)

FLEXION	1.18in
COUNTER FLEXION	1.18in

JOINING METHOD

HOT EXECUTIONS	FS
FASTENERS	K1 - G1 SS

FRICTION COEFFICIENT

Stainless Steel, BA (Brilliant surface)	0.25
Stainless Steel, 2B (Half-brilliant surface)	0.20
Stainless Steel, 2D (Hot-Laminated Surface)	0.29
Rolled Steel Plate	0.29
Plastic Sheet (brilliant surface)	0.29