



TECHNICAL SHEET



BELT TYPE: P 8/A/BL

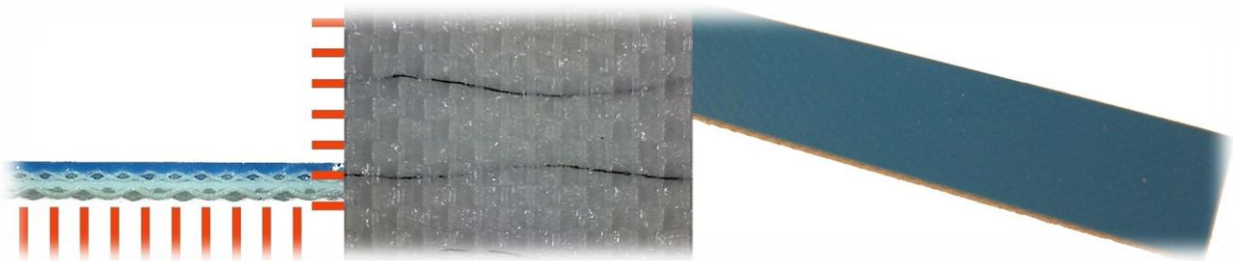
CODE NUMBER: 5 E 13

MOST POPULAR APPLICATIONS

- Poultry processing industry
- To convey foodstuffs, especially chocolate and by-products as well as products with oils and vegetal fats;
- Cooling tunnels, connecting and operating belts for food and confectionery industry.

GENERAL CHARACTERISTICS

92° Shore A PU cover highly resistant to oils, fats and abrasion. Suitable for direct contact with any type of foodstuff according to Italian law and FDA/USDA standards. PU skimmed bottom cover.



CARRIING COVER

THICKNESS (mm)	0.29mm
THICKNESS (inches)	0.02in
HARDNESS (° SHORE A)	92° Shore A
COLOUR	BLUE
SURFACE	MATT
BOTTOM COVER	PU SKIMMED
POSSIBLE STRUCTURES	F

GENERAL CHARACTERISTICS

No OF PLIES	2
WEFT	RIGID
MAX. PRODUCTION WIDTH (mm)	3000mm
MAX PRODUCTION WIDTH (inches)	118.12in
ANTISTATICITY	YES
TOTAL THICKNESS (mm)	1.3mm
TOTAL THICKNESS (inches)	0.051in
MASS(KG/M2)	1.39Kg/m2
MASS(LB/FT2)	0.29lb/ft2
PULL PER 1% (daN/cm)	8daN/cm
PULL PER 1% (lbf/in)	45.70lbf/in
WORKING TEMPERATURE (C °)	-30+80 C °
WORKING TEMPERATURE(F °)	-22 +176F °
FDA APPROVAL	YES
SLIDER BED	YES
METAL THROUGHES	NO
HORIZONTAL ROLLERS	YES
THROUGH IDLERS	NO / NO
SLIDING	NO

MINIMAL ROLLER DIAMETRES (mm)

FLEXION	20mm
COUNTER FLEXION	30mm

MINIMAL ROLLER DIAMETRES (inches)

FLEXION	0.79in
COUNTER FLEXION	1.18in

JOINING METHOD

HOT EXECUTIONS	FS
FASTENERS	G1 SS

FRICTION COEFFICIENT

Stainless Steel, BA (Brilliant surface)	0.25
Stainless Steel, 2B (Half-brilliant surface)	0.25
Stainless Steel, 2D (Hot-Laminated Surface)	0.29
Rolled Steel Plate	0.25
Plastic Sheet (brilliant surface)	0.25