



TECHNICAL SHEET



BELT TYPE: P20/A

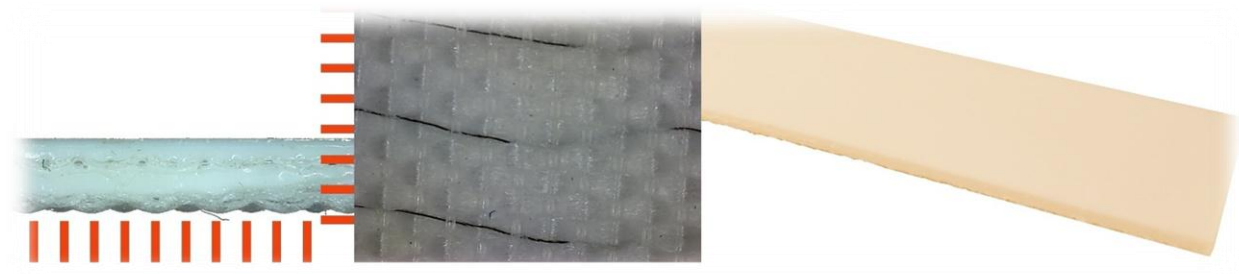
CODE NUMBER: 5 E 22

MOST POPULAR APPLICATIONS

- To convey foodstuff on long interaxial length conveyors;
- Highly recommended for chocolate and by-products as well as oily and fatty products and frozen food.

GENERAL CHARACTERISTICS

Cover and interply material in PU suitable for direct contact with any type of foodstuff according to Italian law and FDA/USDA standards. Bottom cover protected by PU skimming with low friction coefficient



CARRYING COVER

THICKNESS (mm)	0.59mm
THICKNESS (inches)	0.024in
HARDNESS (° SHORE A)	88° Shore A
COLOUR	WHITE
SURFACE	SMOOTH
BOTTOM COVER	PU SKIMMED
POSSIBLE STRUCTURES	F V

GENERAL CHARACTERISTICS

No OF PLIES	2
WEFT	RIGID
MAX. PRODUCTION WIDTH (mm)	3000mm
MAX PRODUCTION WIDTH (inches)	118.12in
ANTISTATICITY	YES
TOTAL THICKNESS (mm)	2.39mm
TOTAL THICKNESS (inches)	0.094in
MASS(KG/M2)	2.39Kg/m2
MASS(LB/FT2)	0.5lb/ft2
PULL PER 1% (daN/cm)	13daN/cm
PULL PER 1% (lbf/in)	74.29lbf/in
WORKING TEMPERATURE (C °)	-30+80 C °
WORKING TEMPERATURE(F °)	-22 +176F °
FDA APPROVAL	YES
SLIDER BED	YES
METAL THROUGHES	NO
HORIZONTAL ROLLERS	YES
THROUGH IDLERS	NO / TO BE CHECKED
SLIDING	NO

MINIMAL ROLLER DIAMETRES (mm)

FLEXION	80mm
COUNTER FLEXION	100mm

MINIMAL ROLLER DIAMETRES (inches)

FLEXION	3.14in
COUNTER FLEXION	3.93in

JOINING METHOD

HOT EXECUTIONS	FS FOF
FASTENERS	K3 INOX G3 B3

FRICTION COEFFICIENT

Stainless Steel, BA (Brilliant surface)	0.22
Stainless Steel, 2B (Half-brilliant surface)	0.24
Stainless Steel, 2D (Hot-Laminated Surface)	0.28
Rolled Steel Plate	0.23
Plastic Sheet (brilliant surface)	0.20